

# CENTRIFUGAL VACUUM CONCENTRATOR

## ALS-INS005



## KEY FEATURES

- **Space-Saving Design**
  - Small volume with large capacity, with a width of only 28cm.
- **Corrosion-Resistance**
  - The centrifuge chamber is treated with a Teflon coating for enhanced corrosion resistance.
  - Teflon material is used for the all gas contact parts.
- **User-Friendly Operation**
  - Incorporates a one-button start/stop function to prevent accidental operation.
- **Safety Features**
  - **Exhaust Gas Evacuation:** Exhaust gas automatically vented after the operation is completed.
  - **Exhaust Gas Evacuation:** Exhaust gas automatically vented after the operation is completed.

TECHNICAL SPECIFICATION	
Speed range	1800 rpm
Maximum Centrifugal Force	380 × g
Time Range:	0 to 9999 minutes
Temperature Control Range:	RT +5°C to 70°C
Temperature Control Accuracy:	± 1°C
Standard Rotor:	66*1.5ml tubes
Maximum Capacity:	132*1.5ml   24 *5ml   10*15ml
Noise Level:	Not exceeding 60 dB(A)
Machine Power:	660 W
Power Supply:	AC 220V, 50Hz/60Hz, 10A
Dimensions (L × D x H):	350 × 280 × 290 mm
Weight:	18kg without pump

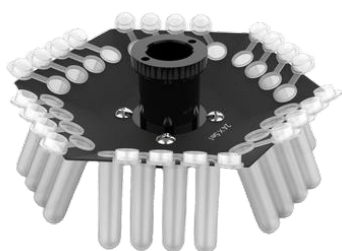
## Accessories



- Diaphragm vacuum pump
- Ultimate Vacuum 8mbar
- Low Noise
- PTFE Coated Head
- Pumping speed at 1 ATM: 35L/min
- Inlet and outlet connectors: 8mm Tower
- Ultimate Vacuum Value: 8mbar(800pa)
- Voltage: 220V/50Hz
- Noise (Under Ultimate vacuum): ≤50dB
- Power: 200W
- Size(L\*W\*H)(mm): 266\*163\*257
- Weight: 9.2kg



66<sup>+</sup> \* 1.5ml



24<sup>+</sup> \* 5ml



10<sup>+</sup> \* 15ml